

Monochrome Production Printers

# RICOH

## Pro™ 8410/8420

### SERIES

✓ Printer ✓ Copier ✓ Scanner

**RICOH**  
imagine. change.



RICOH Pro  
8410/8410S

111  
ppm Black &  
White

RICOH Pro  
8420/8420S

136  
ppm Black &  
White



# Work faster and smarter.

Deliver pristine monochrome output at the pace your business demands. Designed for fast turnaround, on demand applications, these cutting-edge presses can produce upwards of 1,000,000 A4 impressions a month. Choose from dedicated print only models or tailored multifunctional systems. With speeds ranging from 111 to 136 pages per minute, they offer unparalleled performance.



## The RICOH Pro 8410S/8420S.



# Environmentally friendly, too.

In every walk of life, sustainability is important.  
Your printer, that everyday workhorse, is no exception.  
Naturally, you need one that's productive and easy to operate.  
But you also need it to be environmentally responsible.  
RICOH Pro 8400 series are designed for sustainability.  
They treat operators and the environment with equal care.  
Delivering powerful support for client operations,  
they're also versatile and robust. Everything you need.

**RICOH: driving sustainability for the future.**

## A powerful performer.

The RICOH Pro 8400S is pictured above.

# Enjoy astonishing quality and productivity.



## Produce flawless black and white prints.

Elevate quality with an advanced monochrome production system from Ricoh. Our cutting-edge VCSEL imaging technology and well-received toner deliver sharp text and smooth halftones at 2,400 x 4,800 dpi resolution. Save energy with a low fusing temperature, and reduce supply needs with a low toner pile height. Enjoy precise front and back registration with the press easily adjusting the paper position to correct for any shift.

- Proven VCSEL (Vertical Cavity Surface Emitting Laser) imaging technology.
- Well-received toner composition delivers smaller, more uniform particles.
- Crisp text, fine lines, and seamless halftones at 2,400 x 4,800 dpi resolution.
- High quality output with precise front-to-back registration.
- Low fusing temperature helps to reduce energy consumption.

## Seamlessly expand your media capabilities.

Ready to help you grow monochrome volumes, these systems support media up to 350 gsm and effortlessly produce high quality monochrome documents, including direct mail, newsletters, books, and manuals. Additionally save time and provide exceptional results by applying settings from the integrated media library.

- Perfect for direct mail, newsletters, books, and manuals.
- Print in high resolution on coated stocks of up to 350 gsm.
- Effortlessly handle SRA3 media and banner sheets.
- Ricoh's cloud-based media library applies optimum settings.



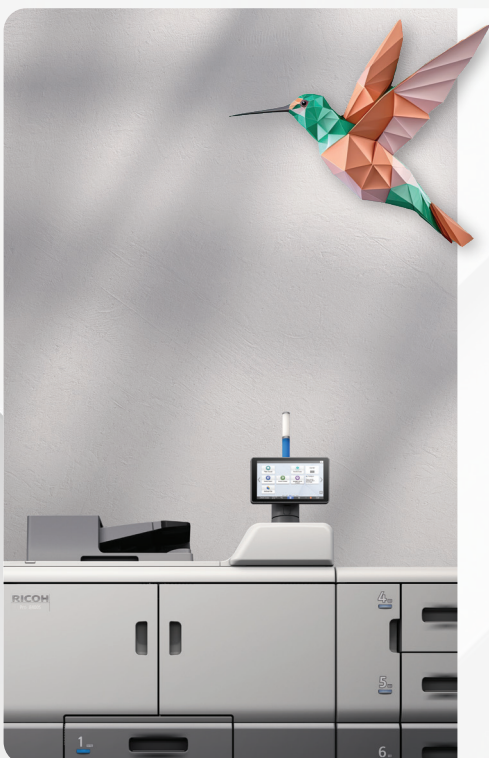


# Versatile solution to diverse printing needs.

## Empower office and production workflows.

Because every workflow is different, the presses can be tailored to a variety of needs, including office, production, and data printing. Ricoh's integrated GW controller handles regular office applications. Incorporate the latest Fiery EB-36 print server for easy load balancing in graphic-intensive workflows. Equipped with Ricoh's genuine IPDS print option, they deliver accurate, high value transactional documents efficiently.

- Support office, commercial, and data-driven print streams.
- Integrated Ricoh controller meets regular office needs.
- Optimise print workflows with the latest Fiery EB-36 print server.
- Genuine IPDS option for transactional printing.



## Dynamically scan and distribute information.

Copier models are equipped, as standard, with a productive single-pass document feeder. Promote digitalisation and save time with simultaneous duplex scanning at speeds of up to 280 images per minute, as well as automating image capture of small documents, such as business cards. Also employ versatile scan-to features for efficient document distribution.

- Scan, record, and distribute business critical information.
- 250-sheet single pass document feeder enhances productivity.
- Duplex scanning at up to 280 images per minute.
- Promote digitalisation by batch scanning large document sets.
- Effortlessly handle smaller documents, including business cards.

# Benefit from seamless end to end finishing.



## Implement powerful inline finishing solutions.

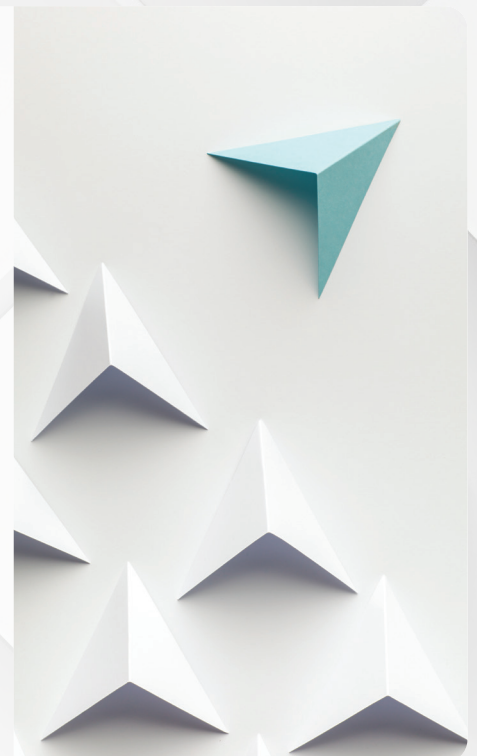
Ensure every job is finished to the higher standard. Streamline production processes and realise superior results with end to end feed and finishing solutions from Ricoh and the partners. Simplify your workflow and accelerate delivery with our cutting-edge full-line systems.

- Automate your workflow and deliver superior results.
- Effortlessly produce brochures, books, and manuals.
- Integrate colour content and finish seamlessly inline.
- Improve productivity, reduce costs, and impress clients.
- End to end solutions from Ricoh and its partners.

## Fold and collate documents ready for distribution.

Our innovative end to end finishing solutions include folding and stacking. Saving time and enhance production capabilities with a compact multifolding unit that supports four fold patterns and media weights of 64 to 150 gsm. And maximise production time with two high capacity stackers with a total capacity of 10,000 sheets.

- Expand your horizons with labour saving inline finishing solutions.
- Automate a variety of folding job with a compact inline multi folding unit.
- Accelerate post-press productivity with twin high-capacity stackers capable of 10,000 sheets.



## Create stunning 200 page booklets.

Optimise colour capacity by moving monochrome production and finishing to your RICOH Pro 8410S/8420S press. Seamlessly integrate pre-printed colour covers and finish booklets more efficiently using an array of powerful Plockmatic inline systems. Create stunning 200 page booklets and trim them on three sides for a smarter finish. Reduce the number of touchpoints and operate more profitably.

- Easily integrate pre-printed covers, inserts, and tabs.
- Create stunning 200 page booklets with colour covers.
- Stitch and fold up to 50 sheets (200 pages).
- Pre-crease covers and create elegant square-back spines.
- Enhance quality and add value with three-edge trimming.



## Conserve energy and reduce carbon emissions.

Ricoh is committed to providing products and services that improve business efficiency and productivity while significantly reducing greenhouse gas emissions. The RICOH Pro 8400 Series is no exception. Helping you cut energy consumption, these presses boast class leading energy efficiency. Plus reducing plastic packaging by 50% from previous model as well as comprise post-consumer recycled plastic by 25% and electric furnace recycled steel by 33%.

- Significantly reduce energy consumption.
- Devices are assembled using power derived from 100% renewable energy.
- Comprise 25% recycled plastic and 33% recycled steel.
- Plastic packaging also reduced by 50%.





# RICOH Pro 8410/8420 SERIES

## SYSTEM SPECIFICATIONS

### GENERAL

Functionality:	Pro 8410/8420: Print Pro 8410S/8420S: Print, copy and scan
Print Process:	1-drum dry electrostatic transfer system with internal transfer belt
Imaging Technology:	40-beam VCSEL (Vertical Cavity Surface Emitting Laser)
Fusing Method:	Oil-less belt
Control Panel:	10.1" Smart Operation Panel
Print Speed:	Pro 8410/8410S: 111 ppm Pro 8420/8420S: 136 ppm
Resolution:	VCSEL 2,400 x 4,800 dpi
Warm Up Time:	Less than 300 seconds
Dimensions (WxDxH):	1,141 x 900 x 1,750 mm (including attention light)
Weight:	Pro 8410S/8420S: 428kg Pro 8410/8420: 413kg
Power Source:	220-240 V, 50/60 Hz
Maximum Power Consumption:	Pro 8410/8410S: 3,300 W Pro 8420/8420S: 3,520 W
Life:	60,000,000 A4 pages or 5 years

### MEDIA HANDLING\*

Standard Paper Trays:	Tray 1: 2 x 1,000 sheets, 52.3 - 256 gsm Tray 2: 500 sheets, 52.3 - 256 gsm Tray 3: 500 sheets, 52.3 - 256 gsm
1st Vacuum Feed LCIT (option)	Tray 4: 2,200 sheets, 40 - 350 gsm Tray 5: 2,200 sheets, 40 - 350 gsm
2nd Vacuum Feed LCIT (option)	Tray 6: 2,200 sheets, 40 - 350 gsm Tray 7: 2,200 sheets, 40 - 350 gsm
3rd Vacuum Feed LCIT (option)	Tray 8: 2,200 sheets, 40 - 350 gsm Tray 9: 2,200 sheets, 40 - 350 gsm
A3 LCIT (option)	Tray 4: 1,000 sheets, 52.3 - 256 gsm Tray 5: 2,000 sheets, 40 - 300 gsm Tray 6: 1,000 sheets, 52.3 - 256 gsm
Bypass Tray (option):	500 sheets, 52.3 - 216 gsm
Maximum Paper Size:	330.2 x 700 mm (option dependent)
Maximum Paper Weight:	350 gsm (option dependent)

\*Paper capacity is based on 0.11 mm paper thickness.

### PRINTER

#### RICOH GW Controller (standard)

Configuration:	Embedded
CPU:	Intel® Apollo Lake Processor 1.6 GHz
Memory:	2 GB
Storage:	Standard: 640 GB (320 GB x 2)
Page Description Language:	Standard: PCL, PostScript 3 and PDF emulation, JPEG, TIFF; Option: Adobe PostScript 3, Adobe PDF, IPDS, XPS

#### Printer Controller EB-36 (option)

Configuration:	External
System Version:	Fiery system FS600 Pro
CPU:	Intel Pentium G7400E
Memory:	8 GB (2 x 4 GB)
Storage:	240/256 GB SSD SATA + 500GB HD SATA
Operating System:	Windows 10 IoT Enterprise 2021 LTSC

### OTHER OPTIONS

Media Identification Unit (Type S3), Decurl Unit (DU5070), A4 LCIT (RT5160), A3LCIT (RT5170), Vacuum Feed LCIT (RT5150), Bridge Unit (BU5010), Vacuum Feed Banner Sheet Tray, Multi Bypass Tray (BY5020), Multi Bypass Banner Sheet Tray, A3 Tray Unit (TK5010), Cover Interposer Tray (CI5040), Multi-Folding Unit (FD5030 and FD5020), GBC StreamPunch Plus, GBC StreamWire, High Capacity Stacker (SK5040), Plockmatic Crease/Trim Unit (CT XL), Buffer Pass Unit (Type S11), Finisher (SR5110), Booklet Finisher (SR5120), Trimmer Unit (TR5050), Plockmatic Booklet Maker (PBM350e/500e), SR5000 Series Output Tray for Banner Sheet (Type S6).

### WORKFLOW SOLUTIONS

Ricoh ProcessDirector, Ricoh TotalFlow BatchBuilder, Ricoh Supervisor, InfoPrint Manager, Fusion Pro VDP Creator, Fiery solutions.

### SUPPLY YIELDS

**Toner: 82,000 prints per bottle\***

\*Based on 6% chart of Ricoh A4 LEF test chart under normal operating conditions.

For maximum performance and yield we recommend using genuine Ricoh parts, supplies.

Specifications subject to change without notice.

**RICOH**  
imagine. change.

[www.ricoh.com.vn](http://www.ricoh.com.vn)

#### RICOH VIETNAM COMPANY LIMITED

##### HO CHI MINH OFFICE/ HEAD OFFICE

Floor 17, E.Town Central, 11 Doan Van Bo Street, Ward 13, District 4, Ho Chi Minh City, Vietnam  
Tel: +84 28 3528 5252 - Fax: +84 28 3636 7211

##### HANOI OFFICE

Floor 5, Toong Phan Boi Chau, 51 Phan Boi Chau, Cua Nam Ward, Hoan Kiem District, Vietnam  
Tel: +84 24 3971 1091 - Fax: +84 24 3971 1130

All brand and/or product names are trademarks of their respective owners. Specifications and external appearance are subject to change without notice. The colour of the actual product may vary from the colour shown in the brochure. The images in this brochure are not real photographs and slight differences in detail might appear. Copyright © 2024 Ricoh Asia Pacific Pte Ltd. All rights reserved. This brochure, its contents and/or layout may not be modified and/or adapted, copied in part or in whole and/or incorporated into other works without the prior written permission of Ricoh Vietnam Co., Ltd.

